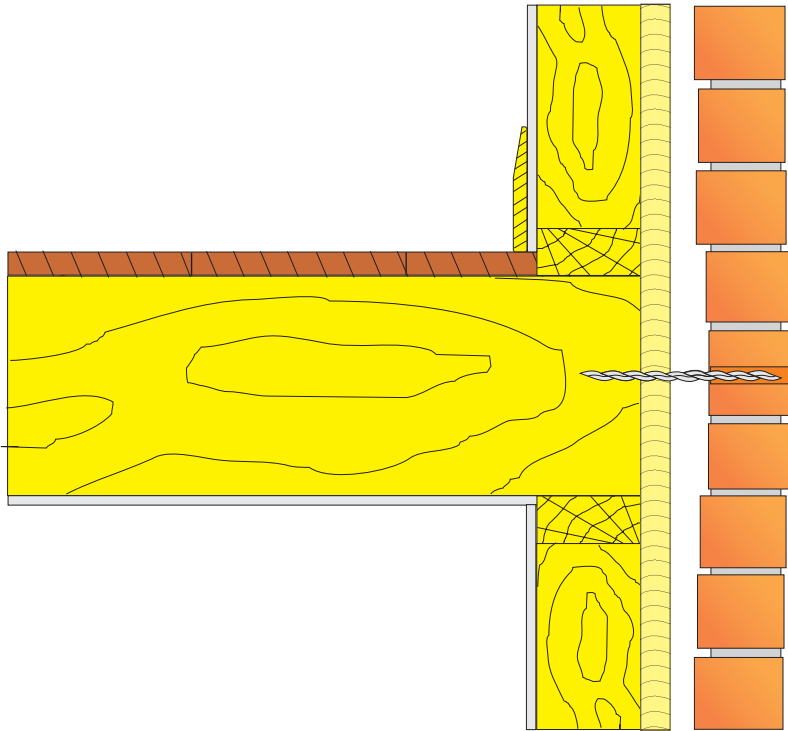


Fixing Bow-fix into joist ends Timber frames



- (1) Locate positions of joist ends and mark on the external side of wall.
- (2) Drill 12mm clearance holes through masonry in line with the centre of the joist ends.
- (3) Clear hole of any dust or loose debris using a air-pump.
- (4) Load bow-fix into support tool and insert through clearance hole, then hammer bow-fix into joist end to the required depth .
- (5) Inject Tri-resin or Cem-spand cementitious grout into hole and completely fill.
- (6) Make good surface of holes using colour matching dyed mortar.

Installation Notes: Unless specified otherwise the following criteria are to be used.

- a) Minimum penetration depth into end grain of timber to be 50mm.
- b) Install Bow-fix ties into every joist end in area concerned.